

CREATURE CORPS LLC

2020 CATALOG

(419)405-9100
Mon-Fri | 9am-5pm

MASKS
COSTUMES
PROPS &
MORE



CREATURECORPSLLC.COM | CREATURECORPSLLC@GMAIL.COM

CREATURE CORPS PRODUCT WARNINGS:

These products are for professional use ONLY. All finished products are individually inspected by hand to ensure consistency in quality. We are not responsible for damages that may occur to the product during Professional usage. These products contain rubber latex which may cause allergic reactions. All masks are designed to fit snug on most average size heads. All gloves are made to fit snug on most average size hands. We do not guarantee the masks or the gloves will universally fit to any individuals exact measurements.

All **CREATURE CORPS** products are hand-crafted from High Quality Materials for durability & normal wear by professional users. Creature Corps cannot guarantee the durability of their product from user to user, as this may vary based on the frequency of use, length of use, circumstances of use, environment, experience of use, proper wear & fitting, reasonable care, & attention given to the the product by the user. The durability & life of our Products strongly depends on the owner/users of the Products. Please be aware of the following information to ensure the longevity of your Product.

GENERAL INFORMATION REGARDING NECESSARY CARE OF FOAM LATEX BODY SUITS, MASKS, AND GLOVES

All Rubber Latex products arrive to our customers dusted with powder; this is to prevent the Rubber Latex pieces from sticking together during shipment. To remove powder and reveal its finish, gently wipe down the exterior of the Suit, Mask, or Gloves using only water with a very damp cloth or paper towel.

Storage should be climate controlled: Cool & Dry: Extreme Temps will affect Most Products.

BONE SUITS, MASKS, AND GLOVES MADE FROM FOAM LATEX AND RUBBER LATEX WILL DETERIORATE WITHOUT PROPER CARE.

We suggest keeping them stored between uses out of direct sunlight in a climate controlled environment. If the product(s) is wet from use (sweat), air dry and disinfect the product(s) before storing. Disinfect and wipe clean interior of each product after every use to prevent the spread of communal infection. Always allow your foam latex item to fully dry out. Air dry ONLY (or to expedite drying carefully use a Blow-Dryer/ Fan- do not leave unattended).

Foam latex masks & gloves **LONG TERM STORAGE:** After the Products are thoroughly dried , Carefully stuff the Products with newspaper/hemp/plastic bags to retain its shape. Store in a cool, dry environment until you wish to use again.

IF PRODUCT GETS UNUSUALLY DIRTY needing to be heavily washed (only recommended in extreme instances) we suggest submersing the item and gently hand washing it in warm water. Carefully hand ring, removing the excess water, hang, and air dry. Spot washing desired areas with a small amount of warm soapy water is also an option. Paint may need to be touched up after heavy washing. Spray interior of the Product with disinfectant spray (EndBac II) before next use.

FOR SLIP LATEX ITEMS simply wipe down the interior of the item with rubbing alcohol and allow to dry. For long term storage, lightly powder the air dried product with baby powder, and store the item in a plastic bag. Storage should be climate controlled: Cool & Dry: Extreme Temps will affect the product.

Completely Dry the hand washed Products – NEVER put any items in a machine washer or dryer.

For any of our products we suggest using a disinfectant spray or ENDBAC II on the interior of the item. ENDBAC II can be purchased online & is a great way to keep products sanitary & fresh for each use!



IF THE MASK IS TOO SNUG FOR YOUR COMFORT CREATURE CORPS OFFERS TWO SUGGESTIONS:

FIRST OPTION: Our 'Do-it-Yourself' technique that not only helps preserve the life of your mask by reducing the wear & tear, but will also give you a quick and easy custom sized mask. Slice the mask up the back of the head just past the base of the "Skull". You can stop there or you can get crafty and add in a triangular wedge of 4-way spandex expanding the mask to your specific needs. We suggest using a piece of black spandex, as it is easily blended, but if your mask is primarily flesh toned use a neutral toned spandex. You can easily hand stitch the piece in, or adhere the piece in using a variety of adhesives we suggest: Barge or 3M 74 Spray. Stipple on mask latex and paint accordingly, blending in your spacer wedge.

SECOND OPTION: If your needs are extremely special we recommend receiving a Life Casting and have a custom mask created from a mold of your head (call for quote). If the diameter of your head is much larger than our average size we can create a specialty version of your desired mask to accommodate your needs (call for a quote). We also suggest sending back the mask & for an additional charge (plus S/H)- we will provide you with a chart to give us your specific head measurements. We will then add an expansion wedge in your mask with a custom foam latex sculpt and paint job blending in the additional piece (call for a quote). This is not made from your actual head so the size will be as close as we can get from the measurements you provide. Surface details will vary depending on each mask.

CREATURE CORPS LLC



CALL OR VISIT OUR WEBSITE TO ORDER:

MON-FRI | 9am-5pm

(419)405-9100

CREATURECORPSLLC.COM



NEW FOR 2020

-FULL MASKS-



DOLLY DEAREST (ALT)

300.⁰⁰ CC0180



DOLLY DEAREST

400.⁰⁰ CC0179

USE STORE CODE **SHOWPRICE** FOR 10% OFF

NEW FOR 2020

-FULL MASKS-



PHAROH MUMMY

\$325.00 CCO162



STANDARD MUMMY

\$265.00 CCO161



CREEPING DEAD 22

\$265.00 CCO159



TRAP JAW TROLL

\$265.00 CCO158



TOXICITY

\$265.00 CCO157



AMAROS DEMON

\$265.00 CCO160

USE STORE CODE **SHOWPRICE** FOR 10% OFF

NEW FOR 2020

-PROPS-



SEVERED CHRISTY

\$130.00 CC0170



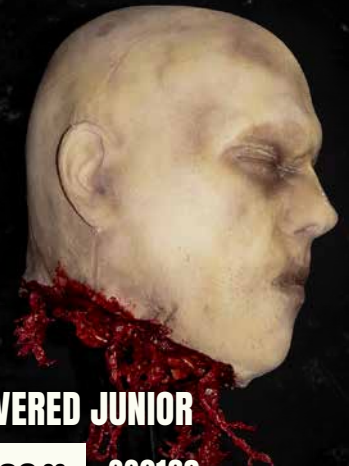
SEVERED CHARLIE

\$130.00 CC0169



SEVERED MIKE

\$130.00 CC0167



SEVERED JUNIOR

\$130.00 CC0168



FEMALE SEVERED ARMS

\$70.00 CC0165



TORSO

\$300.00 CC0164



MALE SEVERED ARMS

\$80.00 CC0166

USE STORE CODE **SHOWPRICE** FOR 10% OFF

NEW FOR 2020

-PROPS-



REAPER CLOAK WITH WALL

\$1600^{.00}

CC0178



REAPER CLOAK

\$1200^{.00}

CC0177

Includes cloak ONLY, wall mounting and theming is up to the customer.

USE STORE CODE **SHOWPRICE** FOR 10% OFF

NEW FOR 2020

-PROPS-



DROP WINDOW HAG

\$2,950.00 CC0171

NO AUDIO

\$2,700.00 CC0172

NO WALL

\$2,650.00 CC0173

NO WALL, NO AUDIO

\$2,400.00 CC0174

USE STORE CODE *SHOWPRICE* FOR 10% OFF

WEREWOLVES

HAND-LAID HAIR IN MIXED GREY

ROBERT KURTZMAN COLLECTION



MID-TRANSFORMATION

\$495.00

MASK ONLY (FOAM LATEX)
CC0018

CLASSIC WEREWOLF

\$495.00

MASK ONLY (FOAM LATEX)
CC0018a



WEREWOLF GLOVES

\$330.00

1 pair (SLIP LATEX)
CC0019



WEREWOLF CHEST SUIT

\$495.00

Fabricated on a easy to wear spandex body suit
CC0017

USE STORE CODE **SHOWPRICE** FOR 10% OFF

WEREWOLF PUPPET



WEREWOLF PUPPET

\$1650.00

CC0148a (ACTOR OPERATED)

\$3750.00

CC0148b (ANIMATRONIC)

- HAND LAID HAIR
- LATEX & POLYFOAM
- HEAD MOVEMENT
- ACTOR OPERATED OR ANIMATRONIC

USE STORE CODE *SHOWPRICE* FOR 10% OFF

UBER-STEIN

CALL FOR QUOTE ON CUSTOM COSTUMES:
Uber-Stein, Werewolves, Clowns, Mummy, Apeman

Uber-Stein Complete costume

- Foam Latex mask/ Foam fabricated upper body/
oversized shirt/ Polyfoam fists

WHILE SUPPLIES LAST

\$1650⁰⁰ CC0145



Uber Mask

\$275⁰⁰ CC0146



UBER GLOVE

\$275⁰⁰ CC0147

USE STORE CODE **SHOWPRICE** FOR 10% OFF

UBER-STEIN

Uber-Stein Animatronic

\$5550.00 CC0175

Uber-Stein Animatronic
No Table

\$5000.00 CC0176



USE STORE CODE **SHOWPRICE** FOR 10% OFF

LIVING STATUES

OLGA FULL LIVING STATUE

\$2650.00 CC0002 (ANIMATRONIC)

\$775.00 CC0002b (ACTOR CONTROLLED)

FULL LIVING STATUE COSTUMES

- 1 REINFORCED LATEX FULL TORSO BODY SUIT
- 1PR SLIP LATEX BONE GLOVES



ANGEL CREST
POLYFOAM PROP - UNPAINTED

\$100.00 CC0003



REAPER FULL LIVING STATUE

\$2650.00 CC0001 (ANIMATRONIC)

\$775.00 CC0001b (ACTOR CONTROLLED)

HALF LIVING STATUE COSTUMES

- 1 REINFORCED LATEX FULL TORSO BODY SUIT
- 1PR SLIP LATEX BONE GLOVES



OLGA HALF LIVING STATUE

\$2300.00 CC0002a (ANIMATRONIC)

\$475.00 CC0002c (ACTOR CONTROLLED)



REAPER HALF LIVING STATUE

\$2300.00 CC0001a (ANIMATRONIC)

\$475.00 CC0001c (ACTOR CONTROLLED)

HALF LIVING STATUE COSTUMES

- 1 REINFORCED LATEX FULL TORSO BODY SUIT
- 1PR SLIP LATEX BONE GLOVES

WOODEN BASE - DIGITAL FILE

\$25.00 SC1000

DOORWAY MOUNT - DIGITAL FILE

\$25.00 SC0002

USE STORE CODE **SHOWPRICE** FOR 10% OFF

MUMMY



Mummy (MASK ONLY)

\$265.00 CC0016 (FOAM LATEX)

\$190.00 CC0016a (SLIP LATEX)

Mummy - Complete Costume Kit

- 1 Foam latex and spandex mask
- 1 par of gloves
- 1 Foam latex bone suit wrapped in various distressed fabrics

WHILE SUPPLIES LAST ON COSTUMES

\$995.00 CC0014



WICKED MAN



WICKED MAN GLOVES

\$165.00 PAIRS ONLY - SLIP LATEX
CC0020a

WICKED MAN MASK

\$220.00 MASK (FOAM LATEX ONLY)
CC0020



**ADD
MORE GORE**
\$25.00 PER ITEM
CC114.

**GOREY DETAILS
VARY PER ITEM**

USE STORE CODE **SHOWPRICE** FOR 10% OFF

EVIL CLOWNS

FEATURED SCARE!

This giant evil clown pops up when triggered.



CLOWN JACK-IN-THE-BOX

\$3500.00 CC0150

EVIL CLOWN HEAD

\$500.00 CC0151



BURNT CLOWN

\$265.00 CC0007 (FOAM LATEX)

(VARIATIONS IN BURN PATTERNS AND PAINT APPLICATIONS)

GINGER CLOWN (MASK ONLY)

\$265.00 CC0006 (FOAM LATEX)

\$175.00 CC0006a (SLIP LATEX)

USE STORE CODE **SHOWPRICE** FOR 10% OFF

THE BUTCHER



BUTCHER #1 (MASK ONLY)

\$265.00 CC0009 (FOAM LATEX)



BUTCHER ARM STUMP (SET OF 2)

\$165.00 CC0011 (LATEX)

BUTCHER MEATHOOK (ATTACHES TO STUMP)

\$135.00 CC0012

BUTCHER CIRCULAR SAW (ATTACHES TO STUMP)

\$135.00 CC0013

PIGMAN



PIGMAN #1

\$265.00 CC0021



PIGMAN #2

\$265.00 CC0022



PIG HOOVE GLOVES

\$110.00 CC0000 (FOAM LATEX)

USE STORE CODE *SHOWPRICE* FOR 10% OFF

MEDICAL MADNESS

LEG STUMP AMPUTATION



\$95.00 CC0107 RIGHT LEG

\$95.00 CC0108 LEFT LEG



These are easy to clean, easy to use, slip latex custom costume pieces. One size fits most, these are attached to the actors under clothing and laced around their body.



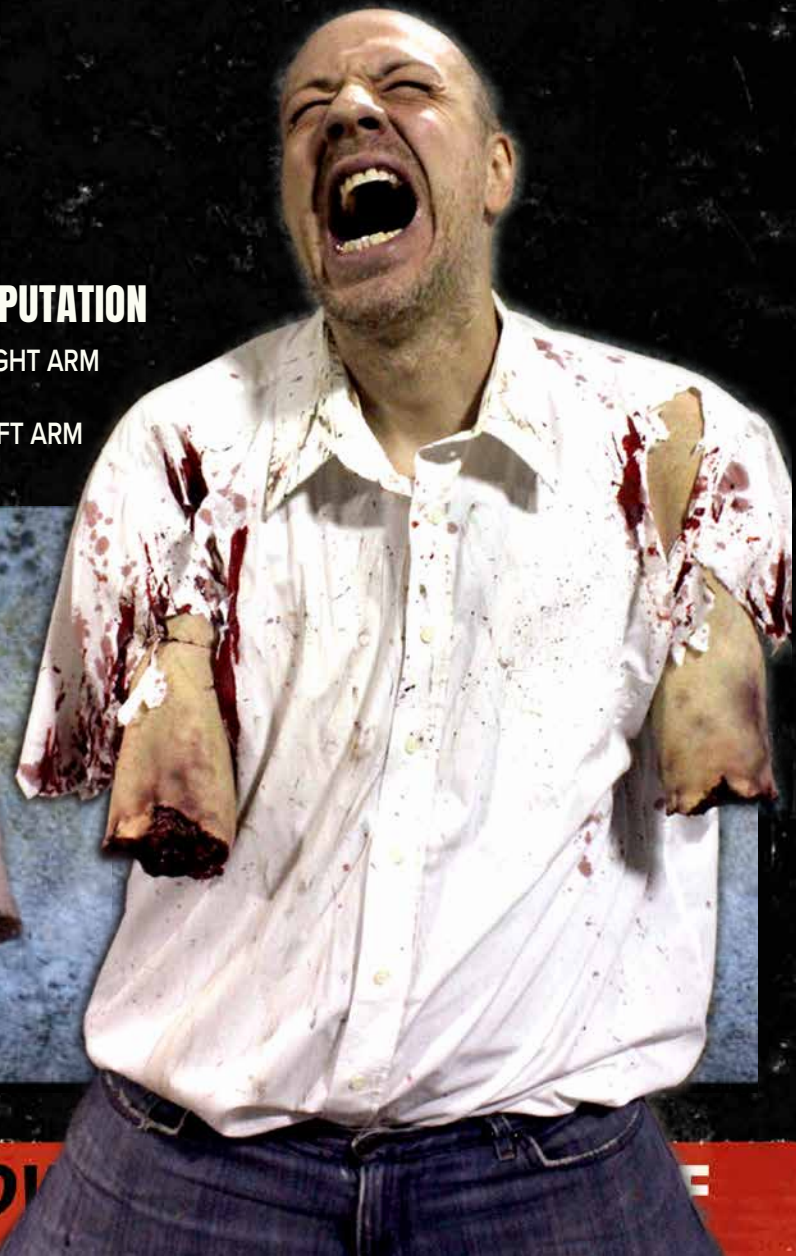
GORE CHEST

\$135.00 CC0113

ARM STUMP AMPUTATION

\$95.00 CC0109 RIGHT ARM

\$95.00 CC0109 LEFT ARM



USE STORE CODE **SHOW**

E

BONE SUITS

BONE SUIT (STANDARD)

1 Foam latex suit on spandex (front only)

\$660.00 CC0027 (XL)

BONE SUIT (DELUX)

1 Foam latex suit on spandex (front and back)

\$795.00 CC0028 (XL)

BONE SUIT (UPPER BODY)

1 Foam latex suit on spandex (front only)

\$440.00 CC0029 (XL)



LARGER SIZES PRICING

Standard Bone Suit 2XL

\$740.00 CC0027a

Deluxe Bone Suit 2XL

\$880.00 CC0028a

Upper Body Bone Suit 2XL

\$520.00 CC0029a



ZOMBIE GLOVES

\$95.00 CC0030

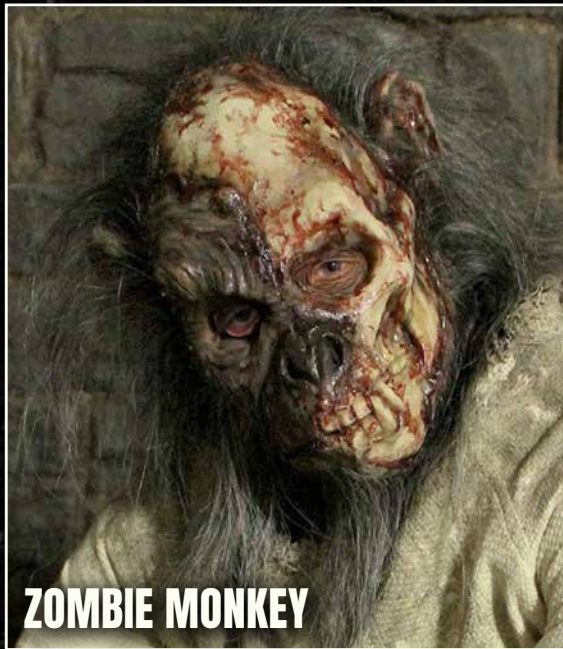


BONE HEAD

\$265.00 CC0015 (FOAM LATEX)

USE STORE CODE **SHOWPRICE** FOR 10% OFF

MASKS



ZOMBIE MONKEY

\$385.00 CC0131



GOAT MASK

\$220.00 CC0136



MONKEY MAN

\$385.00 CC0130



DEMON

\$275.00 CC0156

USE STORE CODE *SHOWPRICE* FOR 10% OFF

FULL HEAD MASKS



SKULL

\$220.00 CC0050 (FOAM LATEX)



SICK GIRL (HAIR INCLUDED)

\$265.00 CC0047(FOAM LATEX)



CREEP

\$220.00 CC0053 (FOAM LATEX)

\$180.00 CC0053a (SLIP LATEX)



VAMPIRE

\$240.00 CC0055 (FOAM LATEX)

ADD
MORE GORE
\$25.00 PER ITEM
CC114

GOREY DETAILS
VARY PER ITEM



STYGIAN WITCH (HAIR INCLUDED)

\$265.00 CC48 (FOAM LATEX)



SCARECROW

\$265.00 CC0051 (FOAM LATEX)

USE STORE CODE **SHOWPRICE** FOR 10% OFF

HALF MASKS

SLIP LATEX ONLY
ADJUSTABLE HEAD STRAP
EASY TO CLEAN AND MAINTAIN



FLESH MASK #2

\$90.00 CC0077



STITCH FACE

\$90.00 CC0074



HOUSE CLOWN

\$100.00 CC0074



MOTHER

\$80.00 CC0079



FLESH MASK #1

\$80.00 CC0071

USE STORE CODE **SHOWPRICE** FOR 10% OFF

CREEPING DEAD



Creeping Dead #1

\$275.00 CC0031 (FOAM LATEX)

FEATURED GRUESOME SCARE!

Slip latex facial piece attached with magnets. Actor removes the "skin" revealing the juicy muscle!



CREEPING DEAD #2

\$275.00 CC0032 (FOAM LATEX)



CREEPING DEAD #4

\$220.00 CC0034 (FOAM LATEX)



CREEPING DEAD #5

\$220.00 CC0035 (FOAM LATEX)



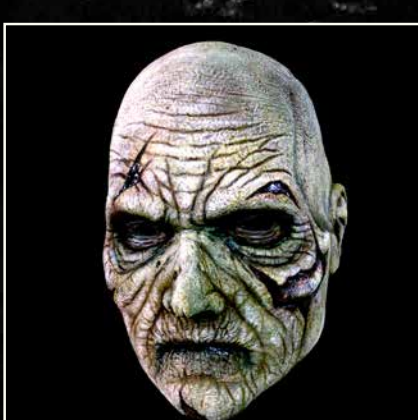
CREEPING DEAD #6

\$220.00 CC0036 (FOAM LATEX)



CREEPING DEAD #8

\$220.00 CC0038 (FOAM LATEX)



CREEPING DEAD #9

\$220.00 CC0039 (FOAM LATEX)



CREEPING DEAD #10

\$265.00 CC0031 (FOAM LATEX)

USE STORE CODE *SHOWPRICE* FOR 10% OFF

CREEPING DEAD



CREEPING DEAD #11

\$265.00 CC0057 (FOAM LATEX)



CREEPING DEAD #13

\$245.00 CC0043 (FOAM LATEX)



CREEPING DEAD #15

\$245.00 CC0045 (FOAM LATEX)



CREEPING DEAD #16

\$245.00 CC0046 (FOAM LATEX)



CREEPING DEAD #17

\$265.00 CC0058 (FOAM LATEX)



CREEPING DEAD #18

\$265.00 CC0059 (FOAM LATEX)



Creeping dead #20

\$265.00 CC0134 (FOAM LATEX)

USE STORE CODE **SHOWPRICE** FOR 10% OFF

DEAD HEADS

PROPS THAT SHOCK!



DEAD AND DECAYED

\$220.00 CC0082



FACELESS

\$130.00 CC0081



FRIED LOUIS

\$130.00 CC0083



SEVERED SARA

\$130.00 CC0086



SEVERED AL

\$135.00 CC0025



SEVERED OLD MAN

\$130.00 CC0085



SEVERED SAM

\$130.00 CC0088



HORROR HAG

\$220.00 CC0080

ADD MORE GORE
\$25.00 PER ITEM

Gorey details vary per item

Add hair to **ANY** dead head

Call for hair color options

\$50.00 CC0101 (PER ITEM)

USE STORE CODE **SHOWPRICE** FOR 10% OFF

DEAD HEADS

PROPS THAT SHOCK!



HUMAN BRAIN

\$50.00 CC0090



HUMAN HEART

\$50.00 CC0089



ALIEN ENCOUNTERS



THING BABY

\$135.00 CC0084



LARGE ALIEN

\$650.00 CC0100

NOTE: Large Alien **DOES NOT** come with holding tank



NOTE: Large Alien **DOES NOT** come with holding tank

USE STORE CODE **SHOWPRICE** FOR 10% OFF

ROBERT KURTZMAN COLLECTION



CLASSIC VAMPIRE

\$220.00 CC0133



MID-TRANSFORMATION

\$495.00

MASK ONLY (FOAM LATEX)
CC0018



CREEPING DEAD #21

\$265.00 CC0151



MR. NAUGHTY CLOWN

\$275.00 CC0154



DUSK VAMPIRE

\$265.00 CC0152

USE STORE CODE *SHOWPRICE* FOR 10% OFF

TERMS AND CONDITIONS

Non-Refundable/Non-Returnable/Non-Exchangeable

As many of our products are custom made or made to order products, or are wearable items that are event driven, due to sanitary reasons we do not allow returns. Items with defects (for example, sewn improperly or missing components), claims for damage due to shipping, shortages, or the wrong merchandise received must state the claim within 48 hours of delivery via e-mail or phone for replacement or repair. If a box received shows signs of wear and tear like it has been crushed, you must note this to the shipping service upon delivery. Please make sure any claims refer to the invoice number of the invoice sent with shipping.

In the event of our mistakes and we need to reship merchandise, we are ONLY responsible for standard shipping. Further the corrected merchandise is not shipped until the return of the incorrect merchandise has been received and evaluated. The evaluation of any returned product, for any reason, will take a minimum of 7 to 10 days or possibly longer during peak times (Halloween).

Payment Terms

50% down-payment, remaining 25% balance, including any shipping and handling fees, is due on delivery. If we do not receive payment within 10 days of notification, order will be subject to a non-refundable cancellation, as we are not a storage facility.

We adhere to the following pricing and delivery schedule during our PEAK SEASON (May 1 – September 20):

10% price increase on all orders placed between 6/23-7/21, delivery by September 15th.

25% price increase on all orders placed between 7/22-8/25, delivery by September 15th. After August 16 call for quote and delivery schedule.

All items are Non-Refundable.

Any returned check for any reason will be charged a \$35.00 fee or the maximum allowed by law.

We allow 1-3 weeks for payment confirmation on any payments made by check (unless you are ordering in our Peak Season)

MERCHANT CHARGE BACKS (Credit Card Disputes) Any fraudulent or invalid merchant charge back fees will be the responsibility of the purchaser. Further, purchaser is responsible for all cost of collection (including the collection agency fees) and all cost related to enforcing the terms and conditions as herein outlined.

Limited Warranty

Please inspect your goods immediately upon receipt.

WE MAKE NO REPRESENTATION OR WARRANTY, EXPRESS OR IMPLIED, WITH RESPECT TO THE SUBJECT UNITS AND EXPRESSLY DISCLAIM WITHOUT LIMITATION, THE IMPLIED WARRANTIES OF MERCHANTABILITY AND FITNESS FOR A PARTICULAR PURPOSE.

General Considerations on Products and Use

We reserve the right to adjust prices and discontinue any product at any time.

We reserve the right to refuse an order from anyone for any reason.

Items are not intended for use by children under the age of 15.

Our pieces are Original Art Pieces which can contain small objects or other elements which are not suitable for children under the age of 15.

Shipping and Handling

All orders will be shipped to the client as soon as possible, based on peak times, business volume at the time of order placement, and the nature of your desired product(s) a standard minimum shipment of 6 weeks or greater should be expected. We will expedite orders for additional fees. We will send all products to our clients via standard shipping from our chosen shipping company. Clients are responsible for all shipping and handling fees in addition to any and all insurance for products being shipped to the client. We are not responsible for delays in delivery by any third party shipping service or insurance for any shipped product. Any additional fees billed by the shipping company will be billed to the client. We reserve the right to choose the shipping company and methods for shipping based on individual orders.

General information regarding care of Foam Latex Body Suits, Masks, and Gloves

All Creature Corps masks and costumes are hand-crafted from high-quality materials for durability and normal wear by professional users; however, Creature Corps cannot guarantee the durability of their products from user to user, as this may vary based on the frequency of use, length of use, circumstances of use, environment, experience of use, proper wear and fitting, and reasonable care and attention given to the products by the users.

The durability and life of a costume or mask rests with you, the owner / user. How you care for your costume or mask has considerable impact on how long it will last. All masks and costumes will require regular maintenance in order to ensure the best and longest wear from the item. There are a few things that you can do to extend the life of your item:

- Keep your costume or mask clean of dirt, grime, sweat, synthetic substances (such as slime and prop blood), and the like after each use.
- When cleaning your costume or mask, use a safe, non-toxic liquid cleaner such as EndBac II/70% Alcohol in a mister in the interior of the mask.
- Always put on and take off the item carefully, without excessive or unnecessary stretching or pulling.
- Never attempt to "squeeze" into an item which is too small for the intended wearer.
- Carefully inspect the item for any issues after each use.
- Store the item in a safe place until its next use.

All Props and Costume Accessories

WARNING: This product contains rubber latex, urethanes, polyester resin, and contact adhesives which may cause allergic reactions in some individuals.

We recommend the client sends us the Prop, Costume, or Costume Accessory item for any and all repairs that may need to be completed.

Please refer to the Repair Service section of these terms and conditions.

Repair Service

All products must be assessed for repairs and will be given an estimate.

In the event that you rip your mask or have paint or surface damage, we can repair it for you.

In the event that you rip your suit or have paint or surface damage, we can repair it for you.

If you need repairs made on other items you received including but not limited to; props, costumes, or costume accessories please call us for a quote on the Repair Service.

Please note that these fees apply for one-time repairs; subsequent repairs require additional fees. Above Prices are minimum required for basic repairs. We reserve the right to adjust repair prices based on amount of damage. We can assess the damaged item by reviewing photo references sent to us via e-mail to give you a more accurate quote.

Governing Law

Any and all legal proceedings for any claims on products delivered subject to these terms and conditions shall be filed In Crawford County, Ohio and governed by Ohio Law.

By completing our manual order form, completing an order online, or placing an order over the phone you are clearly indicating your agreement to our terms & conditions, including but not limited to reasonable legal fees. Neither party shall be liable for any consequential, indirect, special, exemplary, or punitive damages even if apprised of the possibility of such damages. Under no circumstances shall liability exceed the amount of funds paid by the purchaser for products subject to these terms and conditions.

By signing this document I agree to be bound by the above terms and conditions covering all products purchased from Robert Kurtzman's Creature Corps.

Signed: _____ Date: _____